

General Description

The Interactive Monitoring And Control System (IMACS) provides the user with the capability to monitor and control the status of the facility's locking control, fire alarm, and emergency global functions. IMACS is fully integrated with existing systems and does not interfere with everyday functions of these systems.

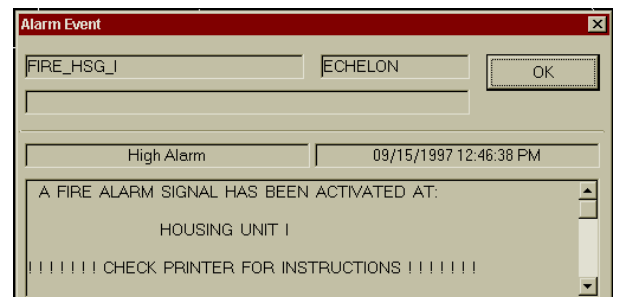
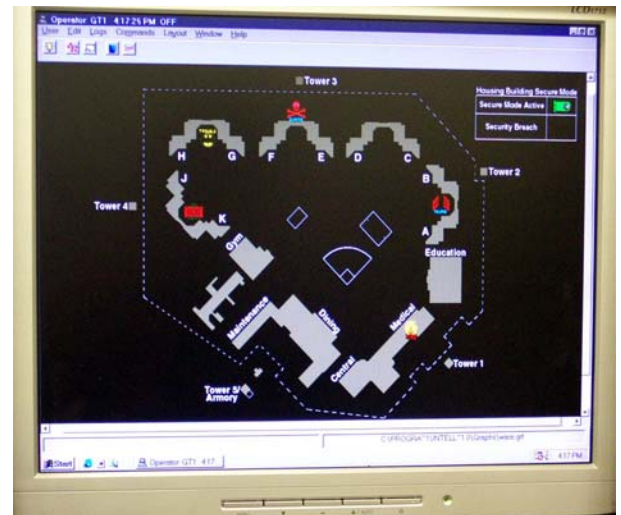
IMACS is designed with a secure remote monitoring capability. An authorized remote computer can dial into IMACS through a modem connection to check the current status of a facility. This remote access capability ensures prompt support for problems and questions.

With IMACS, any event being monitored in the system is promptly displayed on the IMACS monitor, annunciated through the speaker, and sent to the IMACS printer. The software also creates an archive log of all operator actions, alarm activities, unauthorized activities, and other program functions on the PC hard drive.

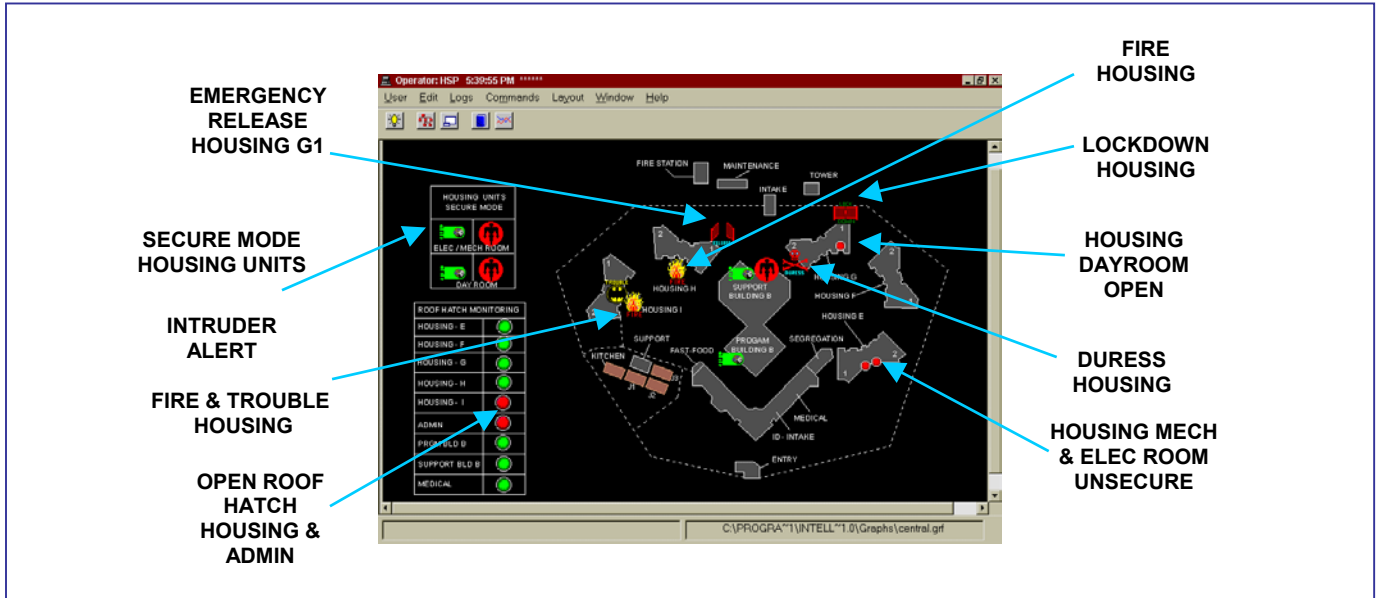
IMACS is composed of individual input and output Acromag modules connected by a peer to peer communications loop located at buildings throughout a facility. Any dry contact point can trigger an event to IMACS. IMACS outputs sinking or sourcing control voltages, which can drive relays or input points on a PLC.

Features

- Windows based computer system with monitoring and remote access software
- Log created for any monitored activity
- Printer that creates a hardcopy of the activities log
- UPS for continuous power to the monitoring system
- Remote Input and Output Acromag modules that integrate with existing systems
- Self-monitoring system constantly checks communication between the modules
- Programmable schedules for secure mode activation on door monitoring and fire alarm reset



Typical Graphical User Interface



IMACS Symbols

SYMBOL	NAME	ME ANING
	FIRE	A FIRE alarm has been activated in the indicated building.
	TROUBLE	Indicates a TROUBLE has been generated with the FIRE Alarm system and maintenance should be notified.
	DURESS	The Officer DURESS has been activated, in the indicated building.
	LOCKDOWN	The indicated building has been put into a LOCKDOWN.
	EMERGENCY RELEASE	EMERGENCY RELEASE has been activated for the indicated building.
	SECURE MODE	SECURE MODE has been activated for the indicated building. Opening of any of the monitored doors will result in the display of the INTRUDER ALERT symbol.
	UNSECURE	Monitored DOOR / ROOF HATCH is unsecured. Areas monitored: Housing Dayrooms, Electrical & Mechanical Rooms & Roof Hatches.
	SECURE	ROOF HATCH SECURE. Monitored Roof Hatch is secured. Opening any of the monitored Roof Hatches will result in indicator changing to DOOR UNSECURE.
	INTRUDER ALERT	Indicates that one of the monitored doors in the building(s) currently in SECUREMODE has been opened.

Ordering Information

CESI IMACS	CES-IMACS	Correctional Electronics Supply, Inc. 2900 Cole Court Norcross, GA. USA 30071 Ph: (770) 729-9395 sales@cesiusa.com
------------	-----------	----------------------------------------------------------------------------------------------------------------------------------------------------------------------------------